



**APPROVED**

**minutes of the session of the Senate of  
Nicolae Testemitanu SUMPh  
no. 1/12 of 25.01.2018**

**REGULATION**

**on the development and defense of the licentiate thesis at  
Nicolae Testemitanu State University of Medicine and Pharmacy  
of the Republic of Moldova**

**I. GENERAL PROVISIONS**

1. This Regulation establishes the main rules regarding the development, structure, graphic design and defense of the licentiate thesis at Nicolae Testemitanu State University of Medicine and Pharmacy (hereinafter "University") and is developed on the basis of the following provisions:
  - Education Code no.152 of July 17, 2014;
  - Regulation on the organization of studies in higher education based on the National Study Credit System, approved by Order of the Minister of Education no. 1046 of October 29, 2015;
  - Regulation on the organization of studies in higher education based on the National Study Credit System at Nicolae Testemitanu State University of Medicine and Pharmacy of the Republic of Moldova, no. 1/8 of 06.04.2017;
  - Regulation on the organization of the graduation examination in integrated higher education at Nicolae Testemitanu State University of Medicine and Pharmacy of the Republic of Moldova, no. 1/8 of 06.04.2017;
  - Government Decision No. 482 of 28 June 2017 on the approval of the Nomenclature of Professional Training and Specialties in Higher Education;
  - The Framework Regulation on the organization of the graduation examination for higher education, approved by the Order of the Minister of Education no. 1047 of 29.10.2015;
  - The Framework Plan for Higher Education (cycle I - License, cycle II - Master, integrated studies, cycle III - Doctorate), approved by Order of the Ministry of Education no. 1045 of October 29, 2015;
  - The Charter of the Nicolae Testemitanu State University of Medicine and Pharmacy registered at the Ministry of Justice on 08.10.2015.
2. Licentiate thesis is a component stage of the Licentiate Examination in licentiate higher education (cycle I) and of the Graduation Examination in integrated higher education (cycles I+II).
3. The licentiate thesis is an important component in the assessment of the graduate's knowledge and scientific activity. It tests the skills to conceive and conduct independent research as well as to draw up and present the results of the research according to the rules of the scientific community.



4. The development of the licentiate thesis is aimed at:
  - development of the graduates' skills to conduct research and acquire the research methods in the specialty field;
  - systematization and application of the theoretical knowledge in the specialty in the process of development of practical solutions, specific to the field of professional training or the realization of the case studies;
  - appreciation of the graduate's capacities and the degree of training for individual post-graduate professional activity.
5. Faculty Dean's offices, as the case, will ensure the plagiarism verification of the licentiate thesis.

## **II. CHOOSING OF THE THEME AND THE SCIENTIFIC ADVISOR**

6. The theme of the bachelor thesis is proposed by the departments / teaching chairs and placed in the Didactic Module of the University Information Management System (further - UIMS).
7. In order to coordinate the elaboration of the thesis, the departments / chairs confirm a thesis advisor. University professors, associate professors, lecturers or university assistants of the departments / chairs may be appointed as scientific advisors.
8. Students choose the theme for the licentiate thesis from the list proposed by the departments, displayed in the UIMS didactic module, as a rule, until the end of the 8th semester of studies for the specialties of Medicine and Preventive Medicine (Public Health); semester VII - for Dentistry and Pharmacy specialties; semester VI - to the Optometry study program. After the approval of the theme, at the end of each semester within the department, the degree of realization of the licentiate thesis is discussed, fact confirmed by the extract from the minutes of the chair meeting and presented in the Dean's office.
9. The themes for the licentiate thesis can be edited and modified with the approval of the scientific advisor of the thesis, being approved at the chair meeting. Students, participants in scientific circles, can propose themes for licentiate thesis.
10. The student's modification of the theme and / or the change of the scientific advisor can be made only once, after informing and with the opinion of the original scientific advisor, as well as with the opinion of the Faculty Dean's office. The student submits a request to the dean's office (Annex 6), which contains the theme of the initial thesis, the theme of the new thesis, the name of the initial advisor and the new advisor (as the case). The request is signed by the student, the initial advisor and the new advisor. After the positive decision of the Dean's Office, the Dean sends an e-mail request to the Vice-Rector for Quality Assurance and Integration in Education, to the Head of the Department of Didactics and Academic Management and to the ITC Engineer for the changing of the theme of the licentiate thesis and of the scientific advisor in the UIMS.



11. Changing the theme and the scientific advisor is no longer possible starting with the first semester of the last year of study.
12. A scientific advisor may coordinate a maximum of 5 theses for one academic year. The Dean's Office will coordinate the number of licentiate theses made within the chair according to the number of students at the faculty and of the teaching staff at the department / chair.

### **III. STRUCTURE AND PRINCIPLES OF THE LICENTIATE THESIS DEVELOPMENT**

13. The licentiate thesis must demonstrate the student's ability to work with literature relevant to the subject. The thesis should be developed correctly from the point of view of methodology, data analysis and argumentation, have a logical structure, be written in scientific language. The aspect must be in accordance with academic standards and comply with the scientific writing recommendations (structure, wording, bibliography) provided in Section IV of this Regulation.
14. The licentiate thesis may be an original research work (clinical, experimental, epidemiological study, etc.) or a literature synthesis work.
15. Licentiate theses are developed and written in Romanian or in the language of the student's studies.
16. The structure of the diploma thesis comprises the following sections:
  - **Title page;**
  - **Declaration of responsibility**, signed by the author and countersigned by the scientific advisor;
  - **Contents;**
  - **List of Abbreviations;**
  - **Introduction;**
  - **The content of the work** as follows:
    - a. Original research work:*
      - ✓ Chapter I. The bibliographic analysis of the theme;
      - ✓ Chapter II. Material and methods of research;
      - ✓ Chapter III. Own results and discussions;
      - ✓ General conclusions;
      - ✓ Annexes (if required);
      - ✓ Bibliography.
    - b. Lucrările de sinteză a literaturii de specialitate:*
      - ✓ Literature synthesis, structured in chapters;
      - ✓ Discussions;
      - ✓ Conclusions;
      - ✓ Annexes (if required);
      - ✓ Bibliography.

16.1. **Title page** – is done in accordance with Annex 1.



- 16.2. **Declaration of responsibility** – is written in accordance with Annex 2 and is placed after the title page.
- 16.3. **Contents** – it is recommended to be placed at the beginning of the work, after the Declaration, where the names of the chapters, the subchapters, the other parts of the thesis and the corresponding pages are written.
- 16.4. **List of Abbreviations** (as the case) – the international abbreviations, unanimously accepted in the field of the theme of the thesis, are used.
- 16.5. **Introduction**, where the following are recorded:
- a. *the actuality of the problem;*
  - b. *purpose and objectives of the research;*
  - c. *the practical importance of the work (as the case).*

The volume of the introduction should not exceed 2-3 pages.

- 16.6. Chapter I. „**The bibliographic analysis of the theme**”. It will carry out a critical evaluation of the relevant literature for the research theme, will have a concrete name, reflecting the theme of the research. The section will contain analysis of different bibliographic sources on the thesis: scientific articles, monographs, manuals, guides, clinical protocols, etc. published in the country and abroad. The main theories, explanatory templates, showing the development and progress of recent research, and possible gaps or limitations, will be presented.

The chapter will be structured on subchapters, which will correspond to the research objectives. The chapter will present the theoretical framework of the studied problem and will not exceed 30-35% of the number of pages of the thesis.

- 16.7. Chapter II "**Material and methods of research**" (if necessary, will be structured in subchapters) will include the general characteristic of the study - the type of study, the design of the research, the material studied; research methods, etc. and the methodology of mathematical and statistical analysis of the obtained results. The volume of this compartment will not exceed 3-4 pages and should answer the following questions:

- ✓ what was the study material (if applicable, name, group, series, producer, country);
- ✓ sampling mode;
- ✓ type of study chosen, according to research
- ✓ reagents and standards used - chemical name, quality, concentration, manufacturer, country of origin;
- ✓ the equipment used (type, model, producer, country of origin);
- ✓ which parameter / parameters are / is to be assessed and assessment methods;
- ✓ what were the criteria for its / their choosing;
- ✓ what was the way to obtain the reagent solutions, stock, working;
- ✓ what were the working conditions, including the way of preparing the sample for analysis (if applicable).

The information must be sufficiently precise for a reader to reproduce and verify the reported work.

- 16.8. In Chapter III "**Own results and Discussions**" the results, which will be in accordance with the design and the research methods used, will be presented. In this part of the



paper the tables and figures, which will present the results of the research and the discussion of these, the statistical processing of the data and the own opinion of the research, will be included. Interpretation of own data will be done by reference to data from the literature, indicating similarities and differences.

- 16.9. **Conclusions** will be briefly written out on points that will contain a summary of the results obtained and will reflect their opinions and personal contribution in studying and elucidating the problem addressed.
- 16.10. In the **Annexes** various materials (survey questionnaire, investigations, schemes, photographs, case study, etc.) relevant to the study undertaken will be included. If some aspects of the research have been published or communicated in the scientific manifestations, copies of the summaries or scientific articles in the original documents and the active participation certificates, will be presented in the annexes. Publications will be boldly quoted in the "Bibliography".
- 16.11. **The Bibliography** will contain bibliographic sources used in the paper. It will be made up according to international requirements (Annex 3). The references will be presented in a numerical sequence according to the alphabetical order of the names of the first authors with the preservation of the unique numbering. References to bibliographic sources are indicated in square brackets, inserted into the text, for example - [8].

#### **IV. RULES ON THE GRAPHIC ASPECT OF THESES**

17. The theses should be written on white paper, A4 sized, 210 x 297 mm, on one side of the paper.
18. The pages of the thesis will have the following fields: left - 30 mm, up and down - 20 mm, on the right - 15 mm. All pages of the thesis, except for the title sheet, will be numbered, the number placed in the center of the page, down. Repeating and absence of pageing is not allowed.
19. The thesis will be computerized, using the Times New Roman font - 12 pt, at 1.5 intervals and using the appropriate diacritical marks (ă, î, â, ș, ț). When capitalizing titles, capitalization and font 14 are allowed, as well as highlighting certain words with Bold or Italic.
20. Each section of the thesis will start from the new page. The chapters will be capitalized, bold, centered, numbered with Arabic numerals (1; 2); the word "chapter" is not written. The subchapter titles are written in lower case and are numbered in Arabic numerals (1.1, 1.2, 2.1, etc.) The first line of each paragraph starts with a 1 cm paragraph. (Annex 4). (as amended by Senate Decision No. 16/7 of 28.11.2018).
21. Formulas, tables and figures are numbered consecutively without taking into account the chapter number, for example:
- ✓ figure 5 - in the explanatory text or Figure 5. - in the title of the figure, which is placed below the figure using the font Times New Roman Regular, Centered (Annex 4);
  - ✓ table 7 - in the explanatory text and Table 7. - in the name of the table, placed above it,



- using Times New Roman, Regular, Centered (Annex 4);
- ✓ the formula is placed at the beginning of the line, and its number - at the end of the line (Annex 4);
  - ✓ if necessary, mention the data source in the table / figure under the title of the table / figure aligned between the left and right margins, indicating the name of the author / s, title of the work, publisher, year, page, or address of the online source (in the same way as the Bibliography is done);
  - ✓ If there are tables that contain notes, they will be written immediately after the table, not in the bottom of the page or in the body of the table.
22. In the thesis it is allowed to abbreviate combinations of words, compound words, words commonly used in accordance with international abbreviations, unanimously accepted in the scientific community and provided that they do not create difficulties in reading the text and do not cause ambiguities.
23. Notes, corrections, letter outlines, erasures, spots, page additions, etc. are not allowed in the thesis.
24. The thesis will have an average volume of 30-45 pages.

## **V. DEFENSE AND ASSESSMENT OF THE LICENTIATE THESES**

25. The licentiate thesis in its final form will be submitted to the department / chair for prior defense at least one month before the deadline indicated for defense.
26. The licentiate thesis will be covered after its approval at the meeting of the respective department / chair and will be submitted 10 days before the final defense to the assessment board, the members of which will be approved by order of the rector (as amended by Senate Decision No. 16/7 of 28.11.2018)
27. The defense of the licentiate thesis is public and takes place in the open session of the Assessment Board at the presence of at least 2/3 of the members, in the form of a summary of the work done by the author, supported by the Power Point presentation, for which up to 15 minutes are given.
28. The licentiate thesis will be assessed according to the following criteria:
- ✓ carrying out of the study / research itself;
  - ✓ content and form of presentation;
  - ✓ defense (presentation of research, use of technical means, discussions on the subject);
  - ✓ confirmation of research results publication (article, thesis, report, poster).
29. The decision on the mark for license thesis defense will be taken at the closed assessment board meeting, according to the evaluation algorithm.
30. The results of the paper's defense will be communicated to the students on the same day after the assessment board meeting.





31. The marks obtained by the candidate will be reflected in the minutes of the Assessment Board meeting, the student's record-book and the Supplement to the Diploma.
32. The absence without good reason on a licentiate thesis defense or the obtaining of a mark less than "5" is qualified as a failure of the graduation / licentiate examination.
33. If the licentiate thesis has been assessed with a mark less than "5", the Board decides whether, after the necessary corrections, it can be defended at the next sessions of the graduation examination, or it is necessary to change the theme of the thesis. The decision of the Assessment Board is final and can not be reviewed.
34. For the purpose of the unitary assessment of the licentiate thesis, the assessment grids will be applied by the scientific advisor (Annex 5) and by the members of the assessment board (Annex 6):
35. The final mark of the presented thesis will be calculated by the application of the coefficients according to the following formula:

$$M_{\text{final}} = (0,2 \cdot M_{\text{SA}}) + (0,8 \cdot M_{\text{AB}}), \quad \text{where:}$$

$M_{\text{SA}}$  – mark of the scientific advisor (from the assessment sheet set out in Annex 5);

$M_{\text{AB}}$  – the Assessment Board mark (arithmetic average from the Assessment Sheets drawn up in accordance with the model in Annex 6);

## V. FINAL PROVISIONS

- 5.1. This Regulation enters into force on the date of its approval by the SUMPPh Senate.
- 5.2. All subsequent amendments and additions to this Regulation enter into force upon their approval by the SUMPPh Senate.
- 5.3. All faculties, if necessary, under this Regulation will develop and approve at the Faculty Council the Regulations on the defense of the licentiate thesis, with the characteristic features of the study program and the specificity of the scientific researches.
- 5.4. The offices of the Faculty Councils have the obligation to make public the Regulation on the defense of the licentiate thesis on the faculty webpage.

Signed by:

Vice-rector for Quality Assurance and  
Integration in Education

\_\_\_\_\_ Olga Cernetchii

Head of Department of Didactics

and Academic Management

\_\_\_\_\_ Silvia Stratulat



**NICOLAE TESTEMITANU  
STATE UNIVERSITY OF MEDICINE AND PHARMACY  
REGULATION  
on licentiate thesis defense**

Page 8/15

Head of Unit of Academic

Management Quality

Dean of Faculty of Medicine no 1

Dean of Faculty of Medicine no 2

Dean of Faculty of Pharmacy

Dean of Faculty of Dentistry

\_\_\_\_\_ Stela Aduji

\_\_\_\_\_ Gheorghe Plăcintă

\_\_\_\_\_ Mircea Betiu

\_\_\_\_\_ Nicolae Ciobanu

\_\_\_\_\_ Sergiu Ciobanu





**NICOLAE TESTEMITANU  
STATE UNIVERSITY OF MEDICINE AND PHARMACY  
REGULATION  
on licentiate thesis defense**

Page 9/15

*Annex 1. Title page*

**Ministry of Health, Labor and Social Protection of the Republic of Moldova**  
(font 14, Bold, Centered)

**Nicolae Testemitanu State University of Medicine and Pharmacy**  
(font 14, Bold, Centered)

**FACULTY NAME**  
(font 14, Bold, Centered, Uppercase)

**Departament/Chair of name**  
(font 16, Bold, Centered)

Licentiate thesis  
(font 15)

**THEME OF THE THESIS IN CAPITAL LETTERS** (font 18,  
Bold, Centered)

**SURNAME, first name of the student** (font 14, Bold, Centered)

*Year \_\_, group \_\_*

**Surname and name of the scientific advisor(s)** (font 14, Bold)  
*Scientific degree, didactic degree* (font 14, Bold, Italic)

Chisinau, year



## DECLARATION

I \_\_\_\_\_ hereby declare on my own responsibility that the licentiate thesis entitled "*The Complete Title of the License Thesis*" is prepared by myself, the materials presented are the results of my own research, are not plagiarized from other scientific papers and have not been presented at another faculty or higher education institution in the country or abroad.

I also declare that all sources used, including the Internet, are indicated in the licentiate thesis, in compliance with the plagiarism avoidance rules:

- ✓ all fragments of text reproduced exactly, even in my own translation from another language, are written with reference to the original source;
- ✓ rewriting of the texts of other authors in my own words has the reference to the original source;
- ✓ summary of other authors' ideas has the exact reference to the original text;
- ✓ work methods and techniques taken from other sources have exact references to original sources.

Date \_\_\_\_\_

Graduate \_\_\_\_\_  
(Surname Name )

\_\_\_\_\_  
(Signature)

Scientific advisor, \_\_\_\_\_  
(scientific and didactic degrees)

\_\_\_\_\_  
(Surname Name)

\_\_\_\_\_  
(Signature)



*Annex 3. Examples of bibliography presentation*

The editing of the bibliography will be done in strict compliance with (letters type, order of quotes, punctuation marks) the following model:

- ✓ for **articles** the following things are mentioned: author's name, title of the article, magazine name, year of appearance, volume, first and last page.

**Example:**

1. Baranetchi I., Prisacari V. Factori de risc în infecțiile septico-purulente nosocomiale de profil traumatologie și ortopedie. Studiu descriptiv transversal. În: Moldovan Journal of Health Sciences. Revista de Științe ale Sănătății din Moldova. 2016, 2 (8), p.15-27. ISSN 2345-1467.
2. Casian D. A. Regarding an alternative treatment for varicose veins: ligation plus foam sclerotherapy. In: Dermatologic Surgery. 2012, 38(1), 146-147. ISSN 1524-4725. doi: 10.1111/j.1524-4725.2011.02212.x (**IF: 1,798**).
3. Chung DR, Zang WS, Kim SB et al. Treatment of herpetic B virus associated glomerulonephritis with recombinant human alpha-interferon. In: Am J Nephrol, 1997, 17:112-117.
4. Hotineanu V., Moraru V., Bujor P., Bujor S. Cholelithiasis – epidemiology, risk factors and etiopathogenic aspects: Up-to-Date. In: Jurnal de chirurgie, 2014, X, 2, p. 101-104. NSN 1584-9341.

- ✓ for **books** the following things are mentioned: authors' names, title of the book, publishing house, place of appearance, year of appearance, first and last page.

**Example:**

5. Ciobanu Gh. *Resuscitarea cardiorespiratorie și cerebrală*. Volumul 1. Serghienco-Ciobanu, L. (red. șt.). Chișinău. Nova-Imprim; 2014.
6. Popovici I, Lupuleasa D. *Tehnologie farmaceutică*, Ed. Polirom, Iasi, 2001.

- ✓ all the bibliographic sources included in the licentiate thesis must be in the final bibliographic list. For the sources downloaded from the internet, web page addresses will be noted. In the final bibliography, they must be at the end of the list:

**Example:**

7. Jones ET, Miles C. *Computing networking*. 2nd edition. Derby, Bugle Press; 2002. Disponibil la: <http://www.imperial.ac.uk/library/digitallibrary> [accesat la 10.06.2007].

**Note:** *If some parts of the thesis were published or communicated during scientific events, the thesis will incorporate a copy of the abstracts or scientific articles from the original documents (magazine, abstract book). These articles will be mandatory cited in the Bibliography.*



*Annex 4. Examples of tables, formulas and figures*

*(as amended by Senate Decision No. 16/7 of 28.11.2018)*

**Example of chapter writing**

**2. CHAPTER TITLE (BOLD CAPS, font 14, centered)**

**2.1. Subchapter title (Bold, font 13)**

**2.1.1. Subpoint title (Bold, font 13, bold)**

In the contents of the subchapter or subpoint, the text displayed will contain the results obtained and their description in the form of tables, figures, ext.

**2.2. Subtitle title (Bold, font 13)**



**Example of tables**

Table 7. Changes in the activity of ALT, AST, PCE and albumin and total serum protein levels in animals with ethylene glycol-induced toxic hepatopathy

Seric indices	Animals cohort	
	Control group	HT
ALT, UI/g prot	0,426 ± 0,02, 100%	0,468 ± 0,03, 110%
AST, UI/g prot	0,226 ± 0,01, 100%	0,236 ± 0,02, 105%
PCE, nmol/s.g prot	681,0 ± 0,04, 100%	547,8 ± 0,04*, 80%
Total protein, g/L	36,49 ± 0,80, 100%	31,03 ± 0,34***, 85%
Albumin, g/L	38,74 ± 1,78, 100%	11,56 ± 0,35***, 30%

*Note:* ALT – alanine aminotransferase; AST – aspartate aminotransferase; PCE – pseudocolinesterase; HT – hepatic toxicity induced by ethylene glycol.

The veracity of the differences compared to the control group: \*–  $p < 0,05$ ; \*\*–  $p < 0,01$ ; \*\*\*–  $p < 0,001$ .

**Examples of formula**

$$n = t \cdot 2 \cdot xp(1-p) / \Delta^2$$

(4)

**Example of figure**

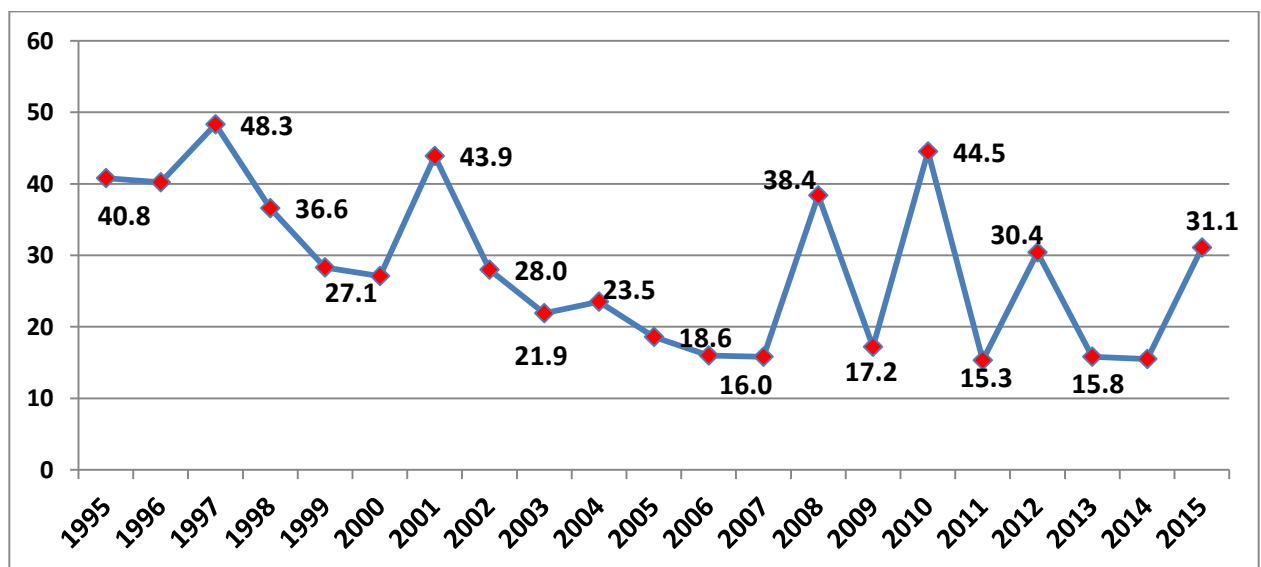


Figure 21. Maternal mortality rate per 100,000 live births in 1995-2015 [Bibliographic reference number].



**LICENTIATE THESIS ASSESSMENT SHEET  
BY SCIENTIFIC ADVISOR**

Assessment of the thesis with the theme:

\_\_\_\_\_

Developed by the student \_\_\_\_\_ group \_\_\_\_\_

**1. Assessment of the quality of the work and research undertaken:**

*1-5 points*

*Points :*

**2. Analysis and synthesis capacity:**

*0,5-1,5 points*

*Points :*

**3. Respecting the rules of structuring and editing of the work:**

*0,5-2 points*

*Points :*

**4. Bibliography quality:**

*0,5-1,5 points*

*Points :*

**Mark** at the stage of assessment by scientific advisor: \_\_\_\_\_ Date: \_\_\_\_\_

**CONCLUSIONS:** The licentiate thesis may be presented and defended before the Assessment Board:

Yes

No

Scientific advisor: \_\_\_\_\_  
*S.N., scientific or / and didactic degree* *Signature*

Head of chair \_\_\_\_\_  
*S.N., scientific or / and didactic degree* *Signature*



*Annex 6  
(as amended by Senate Decision No. 16/7 of 28.11.2018)*

**LICENTIATE THESIS ASSESSMENT SHEET  
BY THE MEMBERS OF THE ASSESSMENT BOARD**

Assessment of the thesis with the theme:

\_\_\_\_\_

Developed by the student \_\_\_\_\_ group \_\_\_\_\_

**Criteria for the licentiate thesis assessment:**

**1. The quality of the drafting of the thesis and the respecting of the structuring rules:**

*0,5-2,0 points*

*Points:*

**2. Assessment of the quality of the research:**

*0,5-2,0 points*

*Points:*

**3. Bibliography quality:**

*0,5-1 points*

*Points:*

**4. The quality of oral presentation and answers to questions put by the Board:**

*0,5-4,0 points*

*Points:*

**5. Aspects of the work have been published and / or presented at scientific forums:**

*1,0 points*

*Points:*

**FINAL MARK**

**Board member** \_\_\_\_\_

*S.N., scientific or / and didactic degree*

Date: \_\_\_\_\_

\_\_\_\_\_  
*Signature*